

the Miller's Tale



CHANDLERS FORD RAILWAY STATION PROGRESSING

May 18 is set to be the reopening date for the Chandlers Fords passenger service. A recent visit to the site indicates that work has at last started with the removal of shrubs and trees from behind the old remaining platform. This will give contractors access to the site and allow the construction of a 50 space car park and parking for 40 bicycles. Although the platform should be ready in time it seems that the station building may not arrive till

later as Hampshire Council have only just received the tenders. The original platform has to be rebuilt because the track was relocated when the lines were reduced from two to one.

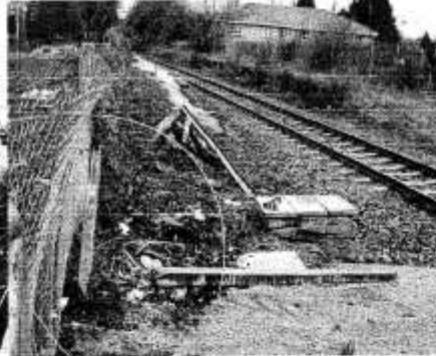
The new link will allow travel to Salisbury via Romsey and Southampton via Eastleigh. From Eastleigh commuters could change onto trains to London Waterloo. With 20,000 people living within 1½ miles from the station this would offer

many people the chance to commute to London without having to get the car out of the garage!

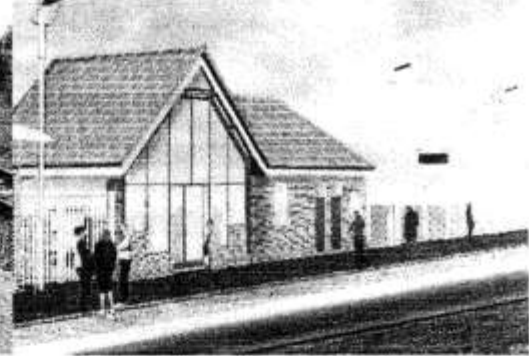
Earlier this year it was reported that there was a risk of delay due to bridge damage in Valley Park, this apparently was not a cause for concern and hopefully the opening date is now back on target.



The original Chandlers Ford station was opened in 1847
Photograph from 'Chandlers Ford' By Barbara Hillier



How the Station looks today



Artists impression of the new 2003 Station!
Picture modified from artists impression in 'Borough News' Autumn 2002

STEAMING INTERESTS

By Barry Eagles

A BIT OF LOCAL HISTORY

The Chandler's Ford railway was built to bypass Southampton and can be useful if the mainline South of Basingstoke is out of action for freight trains. The line is generally used for freight and ballast. These freight trains, which were once Amy

Roadstone, have been known to shake the floors of houses in Millers Dale and come from Mearhead, Frome in Somerset to finish in the the sidings at Chickenhall Lane in Eastleigh. For these reasons it earned the nickname of the "Shake ,rattle and roll" line

Many people are aware that the line was used to take Navy munitions from Dean Hill near to Salisbury.

A few years ago steam trains used to be seen using the Chandlers Ford line but not recently. The "Cathedral Express", trains run Salisbury, Winchester Ely and Canterbury. If an engine goes from Winchester to Eastleigh for servicing, that means it can have a substantial water intake. When the train is running from Salisbury to Eastleigh it travels by Redbridge in Southampton and not Chandlers Ford because it is then facing North which is the correct way around to go on to Waterloo. If it went via Chandlers Ford the train enters Eastleigh facing

south. This requires a trip around the Eastleigh works triangle to ensure the train is facing North for Waterloo

Inside this Issue

Railway Progress	1
Information Board	2
Local Focus	2
Useful Numbers	2
Spare Time Job	3
Sugar and Spice	3
Burns Night	4
Kids Corner / Basement Club	6
Rec Regeneration	7
Blowing Our Trumpet	7
Bridge Club	8
Coach Club	8
Arts Festival	8



Wood clearing prior to work commencing

the Information board



what's on at the community hall?

- Mon:** Yellow Dot 8.10am-5.30pm
 Rainbows 4.30pm-5.30pm
 Ballet 6.00pm-7.00pm
 Aerobics 8.00pm-9.00pm
- Tue:** Yellow Dot 8.10am-5.30pm
 Brownies 6.00pm-7.30pm
- Wed:** Yellow Dot 8.10am-5.30pm
 Brownies 6.00pm-7.30pm
- Thu:** Yellow Dot 8.10am-5.30pm
 Yoga 7.00pm-8.30pm
- Fri:** Yellow Dot 8.10am-5.30pm

HALL BOOKINGS:

Contact: Mrs Linda Mandley
 C/o Eastleigh Baptist Church
 Wells Place, Eastleigh, SO5 5LJ
 ☎ 023 80 613210
 between 9.30am-4.30pm week-days,
 answer-phone at all other times.

Community Hall Keyholder
 Doreen Lewry
 ☎ 023 80 268562

Newsletter team

Phil Heller
 Charles Lewry: editors

Contacts:
 Articles: 023 80265407
 Advertising: 023 80268562

E-mail editor@nmdca.org.uk
 Website www.nmdca.org.uk

Or drop articles into:

8 Weavers Place or
 10 Ashbridge Rise
 North Millers Dale



Welcome to the spring issue of the Millers Tale. This month we have been lucky to have a good selection of contributions from several of our local residents. If you have an interest, hobby, skill or anything else you would like to share with our community we would be pleased to hear from you for future editions.

Yet again this year we had a very successful Burns Night despite the trepidation of 'going it alone' as Robbie and Janet Henderson, our Scottish experts were away in New Zealand. Vic Pida took on the role of addressing the haggis, Richard Gower sporting a natty chefs outfit was the haggis bearer and Malcolm Stainthorpe took up his bagpipes in earnest to entertain in fine style. The Scottish dancing was led by Alex Walker from the Bon Accord Scottish Dancers. A huge thank you to them for all their efforts. And of course the sterling efforts of the ladies who toiled long and hard to produce the excellent food and drink should not go unrecognised.

For anyone new to the area, we aim to publish this newsletter at least four times a year. Our intention is to provide a sounding board for the concerns of our local community, to provide information about developments in and around the area and to organise social events for the local residents.

It has been our objective to foster the concept of neighbourliness on our estate and to help new arrivals in the area feel a part of a thriving and friendly community. In addition, for ex-residents who have moved away, we enable them to keep in touch with our on line website 'nmdca.org.uk'.

We have a very active committee, who as well as organising events, maintain an ongoing two-way connection with the local council, both to air our views and to keep abreast of developments that may impact on the lives of our residents.

We have always stressed that our newsletter belongs to all the residents of North Millers Dale and our job as editors is only to compile the content not to create it.

Graham Parrick CARPET FITTER

Free Quotations

Telephone:
 C/Ford (02380) 254030
 Twyford (01962) 714110
 Mobile (07831) 858615



Useful Numbers

Instead of thumbing through the Telephone Directory or Yellow pages to find that important number, look no further than the Millers Tale. We intend including this as a regular feature, so if you have any suggestions for a useful number that is not included please contact us

Editor Millers Tale Phil 023 8026 5407
 Editor Millers Tale Charles 023 8026 8562

Emergencies

Electricity 0345 708600
 Gas (escapes) 0800 111999
 Police (non urgent) 0845 045 45 45
 Southern Water 01961 714585

Schools

Hiltingbury Infant School 023 8026 5414
 Hiltingbury Junior Scholl 023 8026 1808
 Knightwood Primary 023 8026 1900
 Merton County Junior School 023 8026 5255
 Thornden Secondary School 023 8026 9722
 Toynbee Secondary School 023 8026 9026

Post Office

4 Ashdown Road 023 8025 2791

Local Services

Chandlers Ford Library 023 8026 7393
 Eastleigh Library 023 8061 4646
 Eastleigh Tourist Information 023 8064 1261
 Eastleigh Borough Council 023 8068 8000
 Solent Blue line Buses 023 8033 6235
 Southampton Int Airport 023 8062 0021
 Red Funnel Ships 023 8033 3042
 Railway Enquiries 0845 748 4950

Medical Services

Millers Dale Surgery 023 8026 2488
 Park Surgery, Hursley Road 023 8026 7355
 Boyatt Wood Surgery 023 8047 2126
 Fryern Surgery 023 8027 3252
 Eastleigh Heath Centre 023 8061 2032
 Brownhill Surgery 023 8025 2188
 Southampton General Hospital 023 8077 7222
 Winchester Hospital 01962 863535

Dentists

P R Dodd
 157 Hursley Road 023 8026 7141
 M Mansourian
 67 Bournemouth Rd 023 8026 7889
 Clover Dental Practice
 Fleming Rd, N Baddesley 023 8073 8787



SPARE TIME JOB

Geoff Charnley lives in Weavers Place and now, in his mid fifties, has reduced his working week to four days - lucky chap! On his day-off, Geoff now does a bit of voluntary work as Chairman of Southampton Scrap Store's management committee. He says, "It's great to have the time now to put a something back into supporting the community, and in a useful way".

Southampton Scrap Store is a registered

charity, staffed mainly by local volunteers who really enjoy helping. The Store supplies clean, non-toxic scrap materials suitable for art and craft work (given freely to us by local industry and commerce) to local playgroups, schools, rehabilitation centres, arts groups and the like.

An Aladdin's Cave meets the eye on entering the store which is laid out like a mini-market and indeed operates on much the same lines! The Store, established 20 years ago, is strategically located towards the outskirts of Southampton in Thornhill with easy regional motorway access, in what was a large secondary school. When the school closed, it was rescued by Southampton City Council and is now used for a wide variety of community uses including arts and fitness groups, business seminars and workshops, line dancing and various festivals in addition to the Scrap Store.

The groups supplied by the Store comprise the

Store's "members" who each pay a means related annual membership subscription towards running costs including a part time paid Co-ordinator. The Scrap Store also offers other art and craft materials (paints, pencils, brushes, glue, etc.) at competitive prices and in bulk quantities which can reduce costs for members considerably.

The Store is one of a network around the U.K. It is largely self-financing but does need an annual top-up grant to keep it going. Capital grants have also been obtained for a van to collect the scrap materials (source - National Lottery) and for the refurbishment of a disused listed building which is being used for additional storage.

If you would like to know more or perhaps consider helping out at the Store or on the committee, please contact Geoff on 8025 2816.

Sugar and Spice

or the Pleasures of Sugarcraft
by Liz Ponting

I was introduced to Sugarcraft about 12 years ago when I went along, out of curiosity, to a class on making sugar flowers - and got hooked!

Sugarcraft involves much more than baking and decorating cakes, although that is a large part of what we do. The raw material - sugar - can be made into various pastes which are suitable for coating cakes, modelling figures and making the finest of delicate flowers. Traditional Royal Icing, in the hands of a master, can be piped into the most intricate of patterns, some so delicate as to resemble lace.

I particularly enjoy making flowers and I try to make these as lifelike as possible. My other favourite aspect is modelling figures and creating novelty cakes.

I belong to the British Sugarcraft Guild which aims to promote the craft and to bring people with an interest in Sugarcraft together. Our motto is 'My Craft is My Art'. This is very apt because it is an art form; as well as sugar sculpture I have even seen paintings made of sugar!

The B S G holds exhibitions all over the country with a very high standard of work. Each branch will provide a branch table, usually on a theme, with exhibits made by its members. There are also competitions for individual members. Every four years there is an International

Exhibition held in the Midlands. In 2001, I helped to organise our Branch Table and to our delight we won a Gold Award and the trophy for the best branch. table. It was a very exciting weekend!

The junior branch of the B S G is called the Cygnets (our emblem is a Swan). Mid-Hants Branch Cygnets welcome beginners to workshops at Badger Farm, Winchester. Youngsters from seven-years-old upwards can learn new skills in sugar modelling and it is a good way of making friends.

For the last few years I've been researching into the history of Sugarcraft - pastry chefs made elaborate sugar sculptures as far back as the 16th century, to grace the tables at royal banquets! I have now prepared an illustrated talk on the subject for interested societies and I hope that a book will follow eventually.

I make celebration cakes for



weddings, birthdays and other occasions as well as a lot of Christmas cakes. Each cake is individually designed to suit the requirements of the customer. I can produce a wide range of flowers and I'm always trying out new ones. To produce a spray of flowers takes many hours' work but I find it absorbing, creative and rewarding - especially when I see the smile on the face of the recipient.

I have been asked to produce novelty cakes, representing all sorts of things including a guitar, Cinderella's coach, Beatrix Potter characters, the Three Little Pigs, as well as cakes which reflect adults' interests.

- *Please give me a ring: if you're interested in going along to a meeting of the BSG or Cygnets;*
- *if you belong to a society which would be interested in a talk on Sugarcraft;*
- *or if you would like to discuss a possible commission for a celebration cake or novelty cake.*
- *Liz Ponting 02380 261192*

Reflexology & Massage

Reflexology is a gentle form of natural healing which has been practised for centuries. It involves pressure to reflex points on the feet. Reflexology gently and effectively maintains good health while building up the body's immunity to dis-ease. It is an excellent antidote to stress and therefore eases stress related conditions.

A reflexology treatment will leave you feeling deeply relaxed; a vital, yet often under rated factor in maintaining good health.

Why not try reflexology for yourself and enjoy an hour of pure relaxation?

Contact Sue Rowe on:

Telephone: 023 8025 5451
Mobile: 07979 887174
e-mail: sue@roweonline.co.uk

HERE'S A TOAST TO RABBIE BURNS

LIVING WITH A PIPER!

By Liz Stainthorpe

It all began with the North Millers Dale Community Association's first Burns night in 2001. My husband Malcolm sat beside the Piper who had been hired for piping in the haggis that evening. I didn't really take it very seriously when he expressed an interest in learning to play himself, I thought it was the whisky talking. It wouldn't be the first time after all. When I did begin to realise that he wasn't joking, John McEnroe's famous phrase "You cannot be serious," came to mind.

STAGGERED BY THE SHEER VOLUME OF NOISE BEING GENERATED

TV when I heard this very strange noise outside. On going to investigate, I found Malcolm on the doorstep, bagpipes under his arm and the noise, which was reminiscent of an American train hooter, was in fact just the drones. Being the daughter of a Scots woman I am familiar with the bagpipes, but had never heard them at such close quarters before and was staggered by the sheer volume of noise being generated. In all our years of marriage, I have never dragged him over the threshold and through the front door so quickly. I must admit though that I was very impressed at how well he played after only 6 months of tuition.

My next worry was what would the neighbours make of it all. The bagpipes are not to everyone's taste and I have already mentioned the volume of sound.

After a few weeks he brought an instrument home that looked like a snake charmer's pipe. It didn't sound an awful lot better either but it was keeping him amused in the cold winter days when he could not go windsurfing. A few weeks later he decided that he needed help from an experienced piper and eventually tracked one down in Colden Common. Each Saturday afternoon he goes to practice with Sam in an old stable block where they can make as much noise as they like.

At last the great day dawned when he was allowed to have his very own bagpipes. I was watching the tennis on

Luckily our neighbours have all been very complimentary and as he only plays for half an hour at a time outside, they hopefully haven't found it too intrusive. It helps that the lady who lives behind us is Scottish and has even been heard to sing along to some of the Scottish melodies. He also goes up to Farley Mount on fine days so that he can play away to his heart's content without disturbing anyone. He has tried playing indoors in wet weather but it makes the house vibrate and is very hard on our ears. He has tried all sorts of ear protection but had to admit defeat and buy a set of Small Pipes to practice with indoors when we get prolonged wet weather.

Last autumn Hiltingbury Infant School had a Scottish week and asked Malcolm if he would go up to the school, play some tunes and give a short talk on the bagpipes. His first public engagement at last. By this time he had the kilt and all the trimmings to wear, so off he went to face a room full of 7 year olds. Malcolm was very nervous but all went well and the children obviously enjoyed it. We had been worried about the noise, but luckily it was in the hall and the

acoustics were perfect. This gave him an idea of what it is like to play to an audience and was good practice for the Burns Night in the North Millers Dale Community hall in January of this year. Again he was nervous but he carried it off with great style and, even though I'm biased, I thought his playing was excellent.

It's hard to believe he hasn't got a drop of Scottish blood in his veins and that he has only been playing for 2 years, but I will say he has great legs for the kilt. He has now gained such confidence that he is playing at a wedding in June and is willing to take on other commissions. So if there is anyone out there who wants to hire a piper for a special occasion, he's your man.



Richard Gower the Haggis Bearer



Vic Peda toasts the Haggis

BRIAN & SUZETTE MATTHEWS

Welcome you to
THE PRECINCT GIFT CENTRE
Walk Chandlers Ford 'Aldon's Cave'
Or gifts for all occasions
Coffee and Tea Lounge
8 THE CENTRAL PRECINCT
CHANDLERS FORD
023 8025 4205

- Stockists for:
- Lilliput Lane - Winnie the Pooh - Cubist Cats - Comic Cats - Flower Fairies - Yankee Candles - Woods of Windsor - Crazy Clocks - Byzantium Crystals - Melamine Table Mats - Belgian Chocolates - etc, etc, etc
 - Gifts for Men - Pewter Tankards & Flasks



NMD's own piper Malcolm Stainthorpe




All types of fencing supplied and erected



All types of flooring supplied and laid

FLOORING & FENCING LTD

Common Road, Chandlers Ford, Hants
Telephone: (02380) 253524/253184
Fax: (02380) 270359



BON ACCORD SCOTTISH DANCERS.

CLASSES ARE HELD REGULARLY DURING SCHOOL TERMS, AT 7.30 pm, IN THE SCHOOL HALL OF ST FRANCIS SCHOOL, VALLEY PARK, CHANDLERS FORD.

(near the Valley Park Community Centre) Cost £1.50 per session.

BEGINNERS ARE WELCOME

For further information contact the teacher on 80 267 317

Kids Corner

Names Wordsearch

A	B	A	R	B	A	R	A	B	S
R	Y	H	A	N	N	A	H	D	T
A	C	D	J	A	M	A	I	L	A
C	D	E	D	A	R	W	N	F	N
H	A	T	R	A	N	O	G	A	L
E	R	O	A	S	P	E	N	Y	I
L	O	G	W	E	L	A	L	R	G
N	L	R	D	R	R	G	A	A	R
E	F	A	E	E	A	L	E	G	I
K	H	M	I	T	C	O	N	J	V

Aaron
Barbara
Carl
Dawn
Edward
Flora
Gary
Hannah
Ian
Jane
Ken
Liam

Margot
Neal
Olga
Paddy
Rachel
Stan
Teresa
Virgil



10-13's After School Club

4.15pm - 6.30pm on Tuesday and Thursdays



Over 13's Senior Club

7.00pm - 9.30pm on Tuesdays and Thursdays

The Basement Youth Centre offers a wide range of opportunities for young people.

Including an Art and Craft room, IT Suite (supervised), use of the sports hall, tuck shop serving hot and cold food and drinks, pool/snooker tables, relaxing TV area, karaoke machine, large stock of board games, music centre with the latest CD's and quality time with Youth Workers.

The Youth Workers are involved in delivering issue based work that enables young people to develop personal and social skills, involve young people in democracy and decision making, promote the social inclusion of young people, engage young people in new opportunities and challenging experiences, encourage young people to lead healthy lifestyles.

During the past year young people have been rock climbing at Calshot, participated in a Uganda dance and music workshop, been to see Cinderella, Blood Brothers and Buddy Holly at the Mayflower Theatre. The young people have worked together to make the rules for the youth club and helped to choose furniture for the club (colour and style) We feel that it is important to encourage the young people to be completely involved in decisions made regarding the club.

Future projects!!!!!!!

The after school club are planning a sleepover which will include a workshop on bullying and there are still theatre trips available. We are also planning to invite a coach from Southampton Football club to the centre for coaching on 5 a side!!!

For further details contact Claire Ford on 023 80271991
Or Tessa Pittick on 07968 133461

REGENERATION OF THE HILTINGBURY RECREATION GROUND

By Phil Heller

Report on the Public Meeting at Hiltingbury Junior School on 26 February,

It is of no great surprise that something is now being done as the Council has acknowledged that this facility has been under funded for some 27 years. I recall the Council acknowledging the under funding on our estate at a recent public meeting in our Community Hall.

It has been recognised that the Recreation ground has become run down and is a meeting place for young people in the evening, who when they congregate together may intimidate other residents.

A newly formed Hiltingbury Community Association is planning to put the heart back into Hiltingbury by encouraging the people to organise their own events based on a new Community Centre to be sited on the Recreation Ground. They are taking the view that Hiltingbury needs its own identity, and should not rely on the facilities in Knightwood and Valley Park.

Plans for the regeneration of Hiltingbury Recreation Ground clearly have some way to go. Only about 100 people attended the meeting of which a fair number were Councillors and Speakers. The plans are only at a preliminary stage, and there were a number of participants in the audience who had grave concerns about some of the ideas being proposed. A great deal of money being spent on the project, (over a million pounds) and there

seemed fundamental flaws in the plans being put forward.

In the first instance about £100,000 is being spent on re-laying the surface of the recreation ground. A grant has been obtained from Sport England for this work. The Recreation Ground will be unavailable whilst the new surface is being laid

The skateboard park will be re-sited, although it appeared that no residents were keen to have it close to their properties. The children's play area will also be moved to roughly where the skateboard area is now, and access to ground will be improved with extra car parking.

The bulk of the money is planned for the refurbishment of the Pavilion, with much better changing facilities. One of the proposals is to extend the facility by putting in a flat where a permanent groundsman, warden will live. It is hoped that this person will improve the security of the area, reduce graffiti, and make it less of a no-go area.

Much of the discussion on the night was for a separate Community Centre, which would have rooms for badminton and indoor bowls. The newly formed Hiltingbury Community Association will be responsible for promoting activities and was using this meeting to air their views, invite people to join their group, and demonstrate a need. If by taking these initiatives the Hiltingbury Community Association is able to breathe some life into the community then this will be an excellent venture, I saw very little in the plans to accommodate the young



WINSTALLATIONS

14 WESTON ROAD, EASTLEIGH, HANTS. SO50 9AT

**PVCU - Aluminium
Windows, Doors & Conservatories,
Fascias & Soffits**

Local properties completed recently

Telephone Kevin on 07799 113115 for free estimate

people. Moving the skate board park and perhaps having a BMX track is a start, but not likely to solve the problem of young people congregating there after dark

The response from the audience was generally positive, but with some vocal dissenters. If you have strong views about the way you think Hiltingbury Recreation Ground should be developed, I suggest that you visit the Website. www.hiltingbury.com, or read the press and watch for developments

Alternatively, you are very welcome, as

always to write and air your views to The Millers Tale. In the past, we have received a large postbag on issues such as traffic calming or coppicing the woodland. We have not received so many contributions to the Millers Tale of late. Your ideas and suggestions are always of interest to us

The Hiltingbury Community Association is not linked to the North Millers Dale Community Association in any way but have been invited to contribute articles to the Millers Tale to promote their activities and to advise us of progress in their projects.

Community newsletter contest time

IT'S THAT time of year again - time to prepare your entry in the Hampshire Chronicle Community Newsletter Awards. Parish magazines, school newsletters and learned journals are all welcome in the awards which seek to recognise the hard work of volunteers throughout the county. Categories this year are:

- Parish or village-newsletters
- Charities
- Sport or leisure
- Educational
- Website

There is a trophy for each category winner and the overall winner will receive a cheque for £250. The awards evening will be in March.

Blowing our own trumpet!

MY WIFE pointed out this article in the local paper for a newsletter competition. So it seemed like a good idea at the time to offer up our communities sheet for comparison. Now, whilst I would not consider ours to be the ultimate state of the art design, it should prove to be a good opportunity to have a look at what other communities are producing and see how we compare. Some of you may be aware that we also

publish our newsletter on the internet. We have just recently changed our web address though to the hopefully much easier to remember **'www.nmdca.org.uk'**. This is a completely new site, the old original 'swinternet' site has ceased to be available. If you have any neighbours or friends who have moved away from Millers Dale who may be interested in keeping in touch please could you let them know this new address.

The internet site is

worth a visit if you want to see any of the photos featured in the newsletter in colour. If you would like larger copies of any of these photos I can email them to you as long as I still have the originals.

As well as the web address changing please note that our email contact address has also changed to editor@nmdca.org.uk all these details are on the 'information board' on page two of this issue along with our new useful numbers feature.

Chandler's Ford Festival of Arts

This could be the biggest event to hit Chandler's Ford & Hillingbury for years.

New for 2003, the Festival is the brainchild of the Fun Day Organising Committee. It aims to bring the communities together in a celebration of the arts. It will promote the wide range of activities taking place throughout the year and encourage participation.

Plans are for a two week period in June or July when we hope to bring art to the people with a series of open air and street performances and dance, music, art and photography exhibitions. These events will be supported by a series of workshops where people can try their hand at some of the skills themselves. Musicians, artists and other performers will be on hand to offer advice, guidance, support and encouragement.

We do need your help to make it a success. Visit one of the many performances at the new Thornden Hall, The Ritchie Hall (the base for the Chameleon Theatre group), The Methodist Church or maybe at the Point in Eastleigh. Many ideas are still under consideration and if you are part of an Art Group and would like to take part, then contact our Arts Coordinator, Bridget Whyte on 8068 8444, write to her at Eastleigh Borough



The festival of arts will promote Art in its many different forms.



Come and Support Saints Cup Bid



FA Cup Semi-Final

Sunday 13th April
Southampton v Watford



KO 4:30
Also look out for

JAZZ ON THE GREEN

12:00 - 15:00 Sunday 13th July

Every Monday, 9.30pm Nick's Music Quiz
Every Thursday, 9.00pm Bob's mental challenge

General Knowledge Quiz
CASH PRIZES!!!

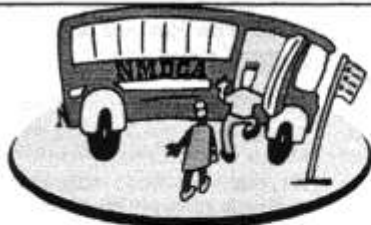
Telephone: 023 8026 9974

A Bridge Too Far?

It has emerged that there are a number of bridge players who live on North Millers Dale and play quite regularly. There are also players who live on the estate who would like to play, but without any regular commitment.

My thanks to Evelyn and Geoff Foster who have already hosted an evening of Bridge, which was thoroughly enjoyed. No matter what your standard or commitment, if you want a game get in touch with Phil on 023 8026 5407 and I will give you the contact numbers of people on and off North Millers Dale who are interested in and play Bridge.

It is not my intention to organise a bridge tournament at the Millers Dale Centre (although that could be arranged if proved to be interest) This is just another way of opening doors and letting us find out who has similar interests right on our doorsteps



NMDCA Coach Club

In the last two editions we have made some suggestions for Coach Club outings. The response has been positive if not overwhelming, suggesting that we should take the plunge, and organise an outing rather than just canvassing opinion.

So, later on in the summer, we will be organising a trip to the Royal Horticultural Gardens at Wisley. We are also considering a Christmas Shopping trip to London, which will probably take in a London show.

For our first venture we are proposing a Coach trip to London with the

opportunity to take a ride on the **London Eye**. Everyone I have spoken to has said it is a great experience. In order to improve our chances of a day with good visibility we have decided to go on **Saturday May 10th**.

Costs for advance booking of the London Eye are as follows:-

Adults	£11.00
Children	£5.00
Seniors	£9.00



Costs of the coach will vary, depending upon the numbers of people going, but we expect the cost of the coach to be as follows:-

Adults	£12.00
Children	£7.00

Whether you just decide to take a day trip to London or to add the extra attraction of an aerial view of the city from the Eye is up to you, either way there is plenty to do.

A look on the London map will show you the

Houses of Parliament and the London Aquarium are nearby, as are the Cabinet War Rooms, National Film Theatre, St James Park, Green Park and Hyde Park. You are close to Buckingham Palace and all of the major museums and art galleries, so you should not be short of things to do, and can take your pick of indoor or outdoor activities.

If you are like me, and fancy the idea of a day trip to London, but the trauma of fighting your way through the traffic, or having to consider the cost of the train (if they run to time) puts you off, then this is probably a good day out for you.

The pick-up for the Coach and set down will be on the Estate, to make sure that it is as easy as possible for all of us.

If you have any questions please contact Phil on 023 8026 5407 or Richard on 023 8026 5362 Alternatively you can e-mail Richard at irmollongbr@netscape.net. For booking your place please use the enclosed flyer.